

WHERE DO YOU WANT TO GO NEXT?

# PLA26-14 Falkland Islands - South Georgia - Antarctic Peninsula

PICTURED HERE:

## Black-browed Albatross

[DISCOVER THIS DESTINATION >](#)

[Home](#) > [Voyages](#) > [PLA26-14 Falkland Islands - South Georgia - Antarctic Peninsula](#) > [Day by day itinerary](#)



Want to go on this trip?  
[English - German speaking!](#)

## PLA26-14 FALKLAND ISLANDS - SOUTH GEORGIA - ANTARCTIC PENINSULA

[Introduction](#)



[Videos](#)

[The ship](#)

[Rates & dates](#)

## Day by Day Itinerary

**PLEASE NOTE:** A typical itinerary to the Falklands, South Georgia and the Antarctic Peninsula is illustrated below. All itineraries are for guidance only. Programs may vary depending on local ice and weather conditions, the availability of landing sites and opportunities to see wildlife. The final itinerary will be determined by the Expedition Leader on board. Flexibility is paramount for expedition cruises.

### DAY 1 Departure from Ushuaia

[News](#) [FAQ](#) [Photos & Videos](#) [Tour operator](#) [Press](#) [Search the site](#)

[Home](#) [Trips](#) [Deals](#) [Destinations](#) [Our fleet](#) [Stories](#) [Why us?](#)

[BOOK NOW!](#)

[LEARN MORE ABOUT USHUAIA >](#)

### DAY 2 At sea

In the Westerlies the ship is followed by several species of albatrosses, storm petrels, shearwaters and diving petrels.

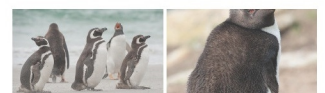
#### The highlights of Day 2

- ✓ Albatross accompanying the vessel
- ✓ Storm and Diving Petrels
- ✓ Shearwaters

### DAY 3 Falkland Islands

In the Falkland Islands (Malvinas) we plan to spend the whole day on the fascinating western side of the archipelago. A hike along the Shore of Carcass Island will give us views of

#### Photos of Day 3



Magellanic and Gentoo-Penguins, as well as close encounters with water fowl and Night herons and passerines. In addition, on Saunders we will be able to observe four species of breeding penguins (Gentoo, King, Magellanic and Rockhopper), Black-browed Albatrosses and King Cormorants.

[LEARN MORE ABOUT FALKLAND ISLANDS >](#)

### The highlights of Day 3

- ✓ Carcass Island
- ✓ Magellanic Penguins
- ✓ Saunders Island
- ✓ Saunders Island

## DAY 4 Port Stanley, Falkland Islands

In Stanley, the capital of the Falklands, we can experience Falkland culture, which has some South American characteristics as well as Victorian charm. In Stanley and the surrounding area we can see quite an important number of stranded clippers from a century ago. All passengers are free to wander around on their own. We recommend a visit to the local church and museum (admission fees not included).

[LEARN MORE ABOUT FALKLAND ISLANDS >](#)

### Photos of Day 4



### The highlights of Day 4

- ✓ Falkland Culture
- ✓ History of the 'Falkland war'

## DAY 5-6 At sea

On our way to South Georgia we will cross the Antarctic Convergence. Entering Antarctic waters, the temperature will drop by as much as 10 degrees C in the time span of only a few hours. Near the Convergence we will see a multitude of southern seabirds near the ship; several species of Albatrosses, Shearwaters, Petrels, Prions and Skuas.

### The highlights of Day 5 - 6

- ✓ Storm and Diving Petrels
- ✓ Shearwaters

## DAY 7-10 South Georgia

In the afternoon of day 7 we arrive at our first landing site in South Georgia. We might visit the bay of Elsehul, with its very active fur seal breeding beach, and then set course to Right Whale Bay, Salisbury Plain, Godthul, St. Andrews Bay, Gold Harbour, Cooper Bay and Drygalski Fjord to give you a good opportunity to see a wide spectrum of landscapes and wildlife, like the introduced Reindeer, Elephant seals, Fur seals, King and Macaroni Penguins. One of the highlights might be our visit to Prion Island, where we will witness the breeding efforts of the huge Wandering Albatross and enjoy watching their displays (the island is closed for visitors during breeding season from 20 Nov – 07 January). At Fortuna Bay we might try to follow in the footsteps of the great British Explorer Ernest Shackleton and hike over to Stømness Bay. There and at Grytviken we'll see an abandoned whaling village, where King Penguins now walk in the streets and seals have taken over the buildings. At Grytviken we'll also offer a visit to the Whaling History Museum as well as to Shackleton's grave near by. We will depart from South Georgia in the afternoon of day 10.

[LEARN MORE ABOUT SOUTH GEORGIA >](#)

### Photos of Day 7 - 10



### The highlights of Day 7 - 10

- ✓ Fur Seals
- ✓ King Penguin colony on Gold Harbour
- ✓ Dramatic Drygalski Fjord
- ✓ Grytviken

## DAY 11 At sea

Where the ship is again followed by a multitude of seabirds. At some point we might encounter sea-ice, and it is at the ice-edge where we might have a chance to see some high-Antarctic species like the McCormick Skua and Snow Petrel.

## DAY 12 South Orkney Islands

We are planning on a visit to Orcadas station, an Argentinean base located in the South Orkney Islands. The friendly base personnel will show us their facilities and we can enjoy the wonderful views of the surrounding glaciers.

[LEARN MORE ABOUT SOUTH ORKNEY ISLANDS >](#)

### Photos of Day 12



### The highlights of Day 12

- ✓ Orcadas Station

## DAY 13 At Sea

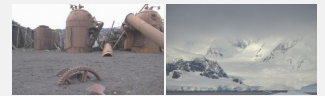
Enroute to the Antarctic Peninsula

## DAY 14 - 16 Antarctic Peninsula

We will sail into the Weddell Sea through the ice-clogged Antarctic Sound. Huge tabular icebergs will announce our arrival to the eastern side of the Antarctic Peninsula. We plan to visit Brown Bluff where we may set foot on the Continent. In good sailing conditions we may decide to extend our time in the Weddell Sea. Charlotte Bay on the west coast of Graham Land was discovered by Adrien de Gerlache during the 1897-99 Belgica expedition and named after the fiancée of Georges Lecointe, Gerlache's executive officer, hydrographer and second-in-command of the expedition. The topography of the surrounding area is mountainous, with nunataks rising through the ice. Charlotte Bay is often filled with icebergs. Mostly we see seals on floes in Charlotte Bay, and occasional, kelp gulls, skuas, shags, or penguins. In Wilhelmina Bay we will admire the rugged ice coated mountains of the Arctowski Peninsula. At Deception Island our ship braves into the entrance of the crater through the spectacular Neptune's Bellow into the ring of Deception Island. Deception itself is a sub-ducted crater, which opens into the sea, creating a natural harbour for the ship. Here we find hot springs, an abandoned whaling station, thousands of Cape Pigeons and many Dominican Gulls, Brown and South Polar Skuas and Antarctic Terns. Wilson's Storm Petrels and Black-bellied Storm Petrels nest in the ruins of the whaling station in Whalers Bay. We leave from here and sail through the Shetland Islands (Half Moon) to the open sea with direction Ushuaia.

[LEARN MORE ABOUT ANTARCTIC PENINSULA >](#)

### Photos of Day 14 - 16



### The highlights of Day 14 - 16

- ✓ Ice-clogged Weddell Sea
- ✓ Adélie Penguins on Paulet Island
- ✓ Set foot on the Antarctic Continent
- ✓ Deception Island
- ✓ Cuverville Island
- ✓ Stunning Neko Harbour

## DAY 17 - 18 At sea

On our way north we are again followed by a great selection of seabirds while crossing the Drake Passage.

## DAY 19 Ushuaia

We arrive in the morning in Ushuaia and disembark.

[LEARN MORE ABOUT USHUAIA >](#)